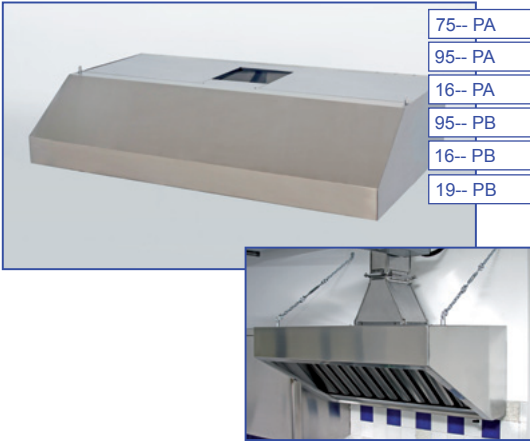


WALL-MOUNTED HOODS

75-- PA	Alfa - mm. 700xLx430h
95-- PA	Alfa - mm. 900xLx430h
16-- PA	Alfa - mm. 1100xLx430h
95-- PB	Beta - mm. 900xLx430h
16-- PB	Beta - mm. 1100xLx430h
19-- PB	Beta - mm. 1400xLx430h



Designed in AISI 304 scotch-brite satin stainless steel, they come either in an "alfa" version - usually known as "snacks" - which are suitable for spaces with low ceilings or for those with limited needs, as well as in the more traditional "beta" version. They are provided complete with 400x400 stainless steel baffle filters and ceiling or wall-mounting accessories and are fitted with a perimeter channel with a discharge tap that collects condensation from both the filters and the hood itself.

CEILING HOODS

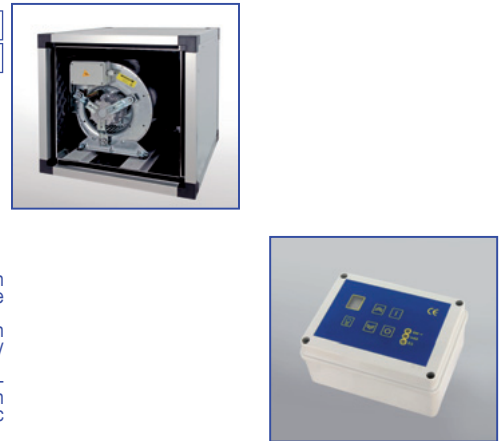
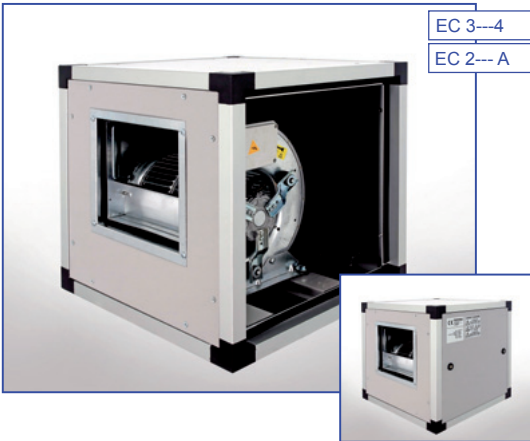
17-- CB	Without extractor fan - mm. 1200xLx430h
20-- CB	Without extractor fan - mm. 1500xLx430h
26-- CB	Without extractor fan - mm. 2200xLx430h



Designed in the traditional, "beta" section in AISI 304 scotch-brite satin stainless steel. They are provided complete with 400x400 stainless steel baffle filters on two sides and ceiling or wall-mounting accessories. Furthermore, they have a perimeter channel with a drainage tap that collects condensation from both the filters and the hood itself.

AIR EXTRACTORS

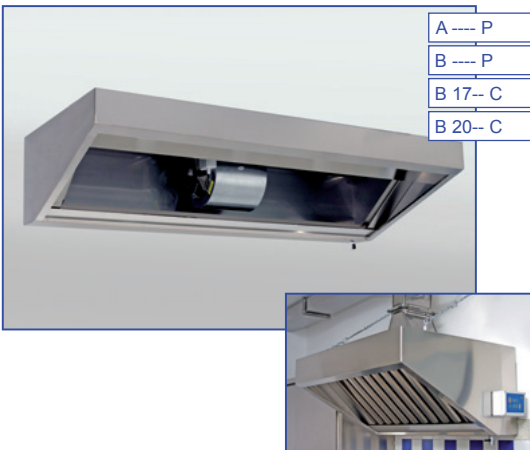
EC 3---4	Directly coupled motor - mm. LxDxH
EC 2---A	Gear motor - mm. LxDxH



The extractors are inserted inside an aluminium tube frame with sheet panels covered entirely with sound-absorbent materials. One side can be opened easily for internal inspections. The version with a single-phase motor is coupled directly to the fan wheel with so-called reverse blades. An electronic controller may be required to adjust speed. The version with a triple-phase motor is equipped with a belt transmission to activate the fan wheel for more professional uses. In this case, there are two transmission speeds and an electronic controller cannot be used.

HOODS WITH EXTRACTOR FANS

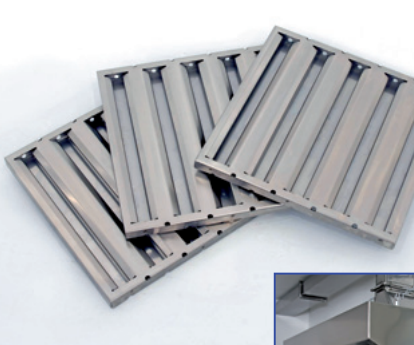
A---- P	Alfa - mm. DxLx430h
B---- P	Beta - mm. DxLx430h
B 17-- C	Central - mm. 1200xLx430h
B 20-- C	Central - mm. 1500xLx430h



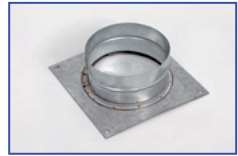
Designed in AISI 304 scotch-brite satin stainless steel, these come either in an "alfa" version - commonly known as "snacks" - which are suitable for spaces with low ceilings or limited needs, or in the more traditional "beta" version. They are provided complete with 400x400 stainless steel baffle filters and ceiling or wall-mounting accessories and are fitted with a perimeter channel with a discharge tap that collects condensation from both the filters and the hood itself. The internal centrifugal extractor is single-phase and an electronic controller may be requested to adjust speed.

HOOD ACCESSORIES

CA 9503	20 W lamp – mm. 650
CA 9502	40 W lamp – mm. 1300
CA 9504	60 W lamp – mm. 1600
CA 9501	Electronic controller – mm. 158x77x117h
95080	Labyrinth filter – mm. 400x25x400h

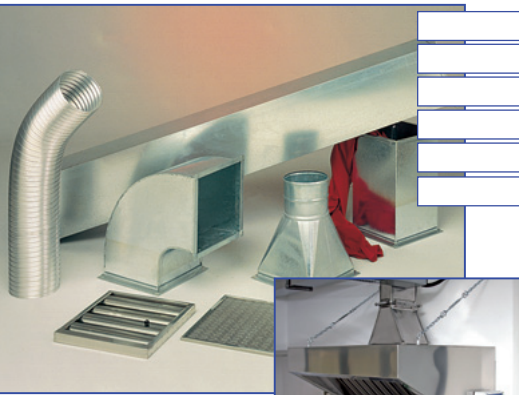


Neon lamps can be installed inside the hoods. They are watertight and airtight and have an IP65 protection level. A button has been provided on the electronic speed controller to switch them on and off.
Electronic controllers provide smooth, progressive speed adjustments for single-phase extractors, for both those inside hoods and those with extractor fans.
The baffle filters are in AISI stainless steel with holes along their perimeter to expel condensation.

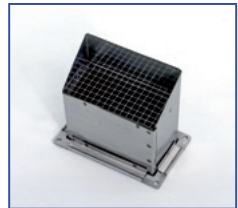
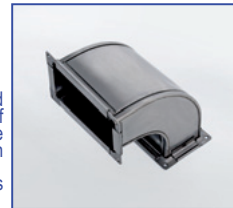


SQUARE AND RECTANGULAR CROSS-SECTION CHANNELLING

Flanged linear channel – section from 200x200 to 800x400
Flanged shift – section from 200x200 to 800x400
Flanged curve – section from 200x200 to 800x400
Flanged three way fitting – section from 200x200 to 800x400
Flanged adaptor – section from 200x200 to 800x400
Ejecting connecting spacer or chimney – section from 200x200 to 800x400



Any type of channelling can be provided using a series of standard channels and elements that can be adjusted to fit the needs of the property where they are installed. Channelling must always be designed and installed by skilled and expert technicians who can calculate the sections as well as its route for optimum results.
Channelling can be in galvanised sheets or in AISI 304 stainless steel.



CIRCULAR CROSS-SECTION CHANNELLING

Linear channel – section from Ø 120 to Ø 400
Flexible hose – section from Ø 120 to Ø 300
Curve – section from Ø 120 to Ø 400
Three way fitting – section from Ø 120 to Ø 400
Adaptor – section from Ø 120 to Ø 400
Socket or exhaust chimney – section from Ø 120 to Ø 400



Any type of channelling can be provided using a series of standard channels and elements that can be adjusted to fit the needs of the property where they are installed. Channelling must always be designed and installed by skilled and expert technicians who can calculate the sections as well as its route for optimum results.
Channelling can be designed in galvanised sheeting or AISI 304 stainless steel. Flexible tubes are available in extendable aluminium.



ACCESSORIES FOR CHANNELLING

Plenum – mm. LxDxH
Plate with collar – section from Ø 120 to Ø 400
Square or rectangular shutter – section from 200x200 to 800x400
Round shutter – section from Ø 120 to Ø 400
Square or rectangular elastic joint – section from 200x200 to 800x400
Nipples and round band – section from Ø 120 to Ø 400



A series of components to complete and make channelling systems functional are available in galvanised sheets or AISI 304 stainless steel. These can also be used to connect the same to hoods in a functional manner. Elastic joints have been designed in waterproof synthetic material with metal flanges.
Channelling must always be designed and installed by skilled and expert technicians who can calculate the sections as well as its route for optimum results.

